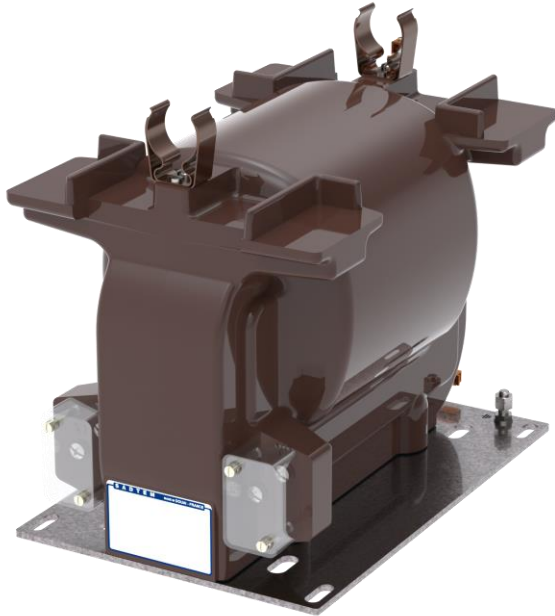


# RY15

## MEDIUM VOLTAGE INDOOR VOLTAGE TRANSFORMER



### GENERAL FEATURES

One HV pole voltage transformer and dry insulated for indoor application with primary fuse clips.

- ✓ **Standards** : IEC 61869-3 | CSA C61869-3 | IEEE C57-13
- ✓ **Ambient temperature** : up to -25/+40°C
- ✓ **CSA qualified**: authorization LR 109295

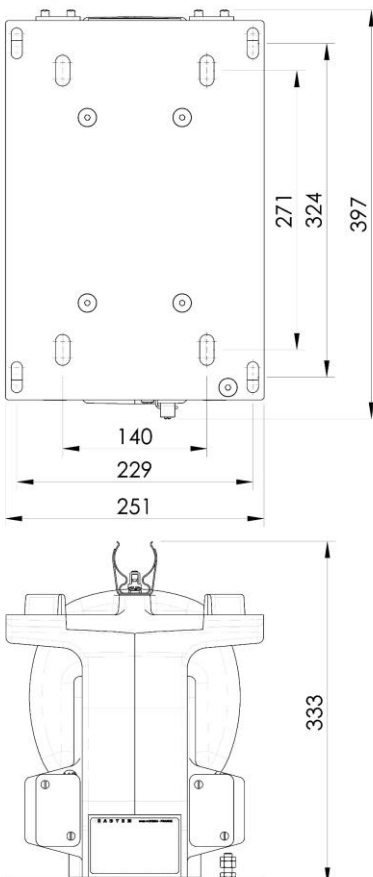


### ELECTRICAL FEATURES

- ✓ **Insulation level** : up to 15/36/110kV
- ✓ **Frequency** : 50Hz | 60Hz
- ✓ **Primary voltage (Un)**: up to  $15000/\sqrt{3}V$
- ✓ **Voltage factor** : 1.5 or 1.9Un | 30s or 8H
- ✓ **Accuracy class (IEC)** : 0.1 | 0.2 | 0.5 | 1 | 3 | 3P | 6P
- ✓ **Accuracy class (CSA)** : 0.15 | 0.3 | 0.6 | 1.2 | 3P | 6P
- ✓ **Accuracy class (IEEE)** : 0.15 | 0.3 | 0.6 | 1.2
- ✓ **Accuracy burden (IEC)** : up to 100VACL0.2-400VACL0.5-900VACL1
- ✓ **Accuracy burden (CSA/IEEE)** : up to 0.3WXYZ
- ✓ **Residual winding** : on request
- ✓ **Thermal burden** : up to 1750VA



### DIMENSIONS



### MECHANICAL FEATURES

- ✓ **Approximate weight** : 50kg
- ✓ **With sealable cover**



### OPTIONS

- ✓ **H.V. Fuse (0.5A or 1A)**

Dimensions in mm

Information given for illustrative purposes. For any other features or need, contact us.

**SADTEM**

INSTRUMENT TRANSFORMERS  
671, Rue Maurice Caullery - ZI Douai Dorignies - 59506 DOUAI cedex - France  
Phone : (33) 03 59 61 15 60  [www.sadtem.com](http://www.sadtem.com)  [contact@sadtem.com](mailto:contact@sadtem.com)