

# INDOOR CURRENT TRANSFORMER

## TYPE : KTO11

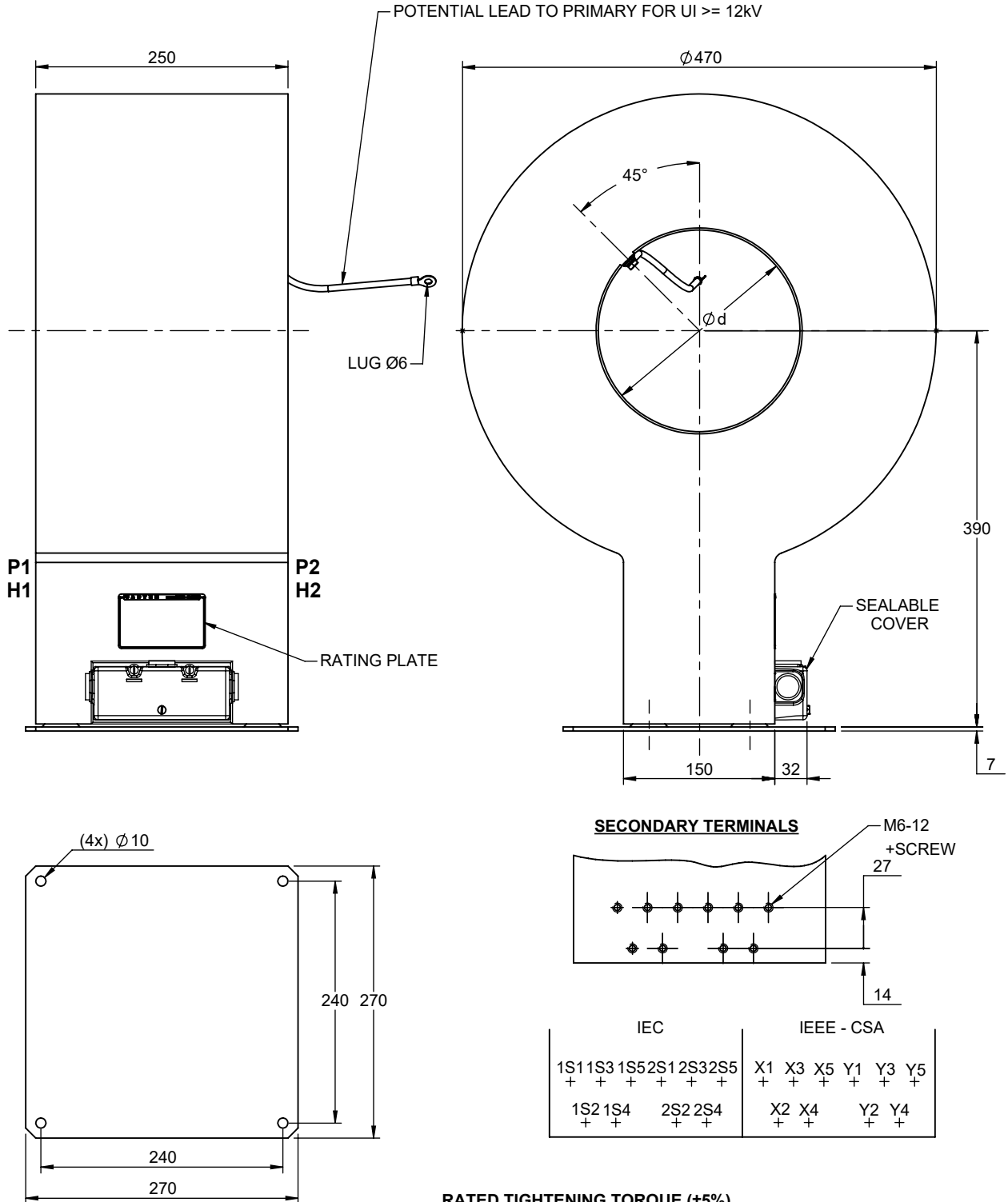
With baseplate and secondary cover

STANDARD : IEC - IEEE - CSA

INSULATION LEVEL : up to 24/50/125kV

PRIMARY CURRENT : up to 8000A

1 to 4 secondary cores



DIA. d available : 200 - 240

**RATED TIGHTENING TORQUE (±5%)**

Secondary terminals (M6) : 7 N.m  
Cover of secondary box (M4) : 3 N.m

**Approx. Mass : 115kg**  
**All dimensions in mm**

This document is the property of SADTEM and may be changed without prior notice

Créat : 02-07-2012

**SADTEM**

BP 655  
59506 DOUAI CEDEX  
FRANCE

**C**

Rév: 13-04-2021

**INSTRUMENT TRANSFORMERS**

**N°2-43140**